

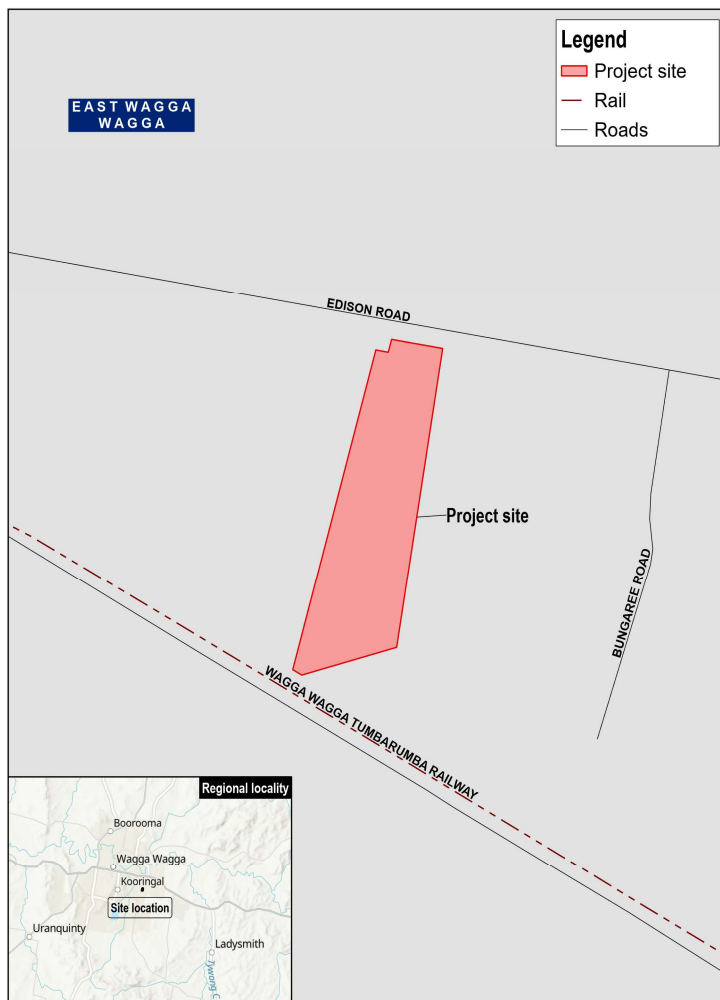
14 September 2024

Project News

Calibre Metals Pty Ltd

Lithium-Ion Battery Recycling Facility

Figure 1 Map showing proposed project site location



Environmental Impact Statement (EIS)

GHD is currently preparing an EIS on behalf of Calibre Metals to support a State Significant Development Application for the Wagga Wagga Lithium Battery Recycling Facility, which includes an assessment of the potential environmental impacts. GHD is also undertaking community consultation regarding the project's development.

The key purpose of the EIS is to assess the environmental, social and economic impacts of the project and help the community and government agencies make informed comments and decisions. The EIS will also assess cumulative impacts and propose suitable measures to mitigate potential impacts.

The draft EIS will be placed on public exhibition for a minimum of 28 days (to be determined by the NSW Department of Planning, Housing and Infrastructure). You will have this time to review the EIS and share your feedback with us. Details of the exhibition period dates will be posted to the Calibre Metals website as soon as they are available.

For more information on the proposed facility and to view a copy of the EIS Scoping Report, please visit the Department of Planning, Housing, and Infrastructure's Major Projects portal through the QR code below:



Calibre Metals is committed to cultivating community partnerships and positively impacting the communities in which we operate. If you have any questions or would like to discuss the project further, please contact GHD Community Engagement Team at 1800 810 680 or community.input@ghd.com